



& JE Theatrical Linens

Top 200 Fabric Designs 2016/2017

info@johnengland.com Tel: UK 028 4062 0400.

Enjoy our fabric tour!



- Please note that the photographs are often shown in a slightly different shade than the original fabrics.
- Up to 5 swatches may be requested free of charge So that you can make sure you order the correct fabric.
- To create your own bespoke designs email info@johnengland.com Tel: UK 028 4062 0400

June 2016 - Pre Launch of our Spring Summer 2018 fabrics



JE1856W
Linen
Depp

JE1861
Cotton/linen
HB Ticking Lge.

JE1860W
Cotton/ Linen
Step noise

JE1815W
Merino wool
Cotton/linen
M&E Twill

JE1733W
Merino wool/
Linen
Zero rib blue



JE1866W
Smokey Robb
Linen

JE1851W
Ballet
Linen

JE1352W
Zero rib
Smoke linen

JE1836W
Strawberry shortcake
linen



JE1283W
Bobbin
Natural linen

JE1782W
linear leaf
Merion wool/ linen

JE1752W
Compound stripes - Linen
available in four colourways

JE1764w
Linen
Guildhall flower
Dusty pink



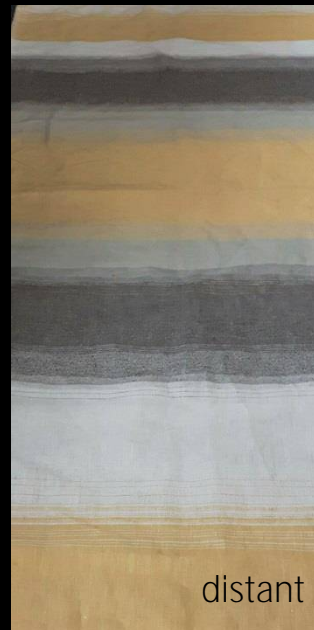
JE1863W
Linen
Blazer

JE1232W
Roly Poly
In Newman Linen

JE1845W
Linen
Floral Dream



close



distant

Dublin Bay Sunrise

Large scale diffused stripe
In 100% pure Irish linen

Available in 145 and
300cm width



JE1337W
Interference
Linen

JE1873W
Herringbone float
Linen

JE1874w
Knobbly
Linen union
Double cloth

JE1875W
Petal
Linen
Double cloth

JE1870W
Noise barrier
Cotton/linen



JE1605W
Blather
Linen

JE1625W
Seoul
Linen

JE1741W
Pick n'pick
Linen

JE1533W
Mistle
Face
Linen

JE1533W
Mistle
Reverse
Linen



JE838W
Jacquard diamonds
Linen
Approx. Weight: 290gsm



JE856W (22)
Whyns woven colour
Linen
Approx. Weight: 250gsm



JE861W (22)-
Spotty woven colour
Linen

The weight and density of all fabrics can be adjusted by changing the weft yarn pick rate.
The lower the pick rate the less the fabric costs.

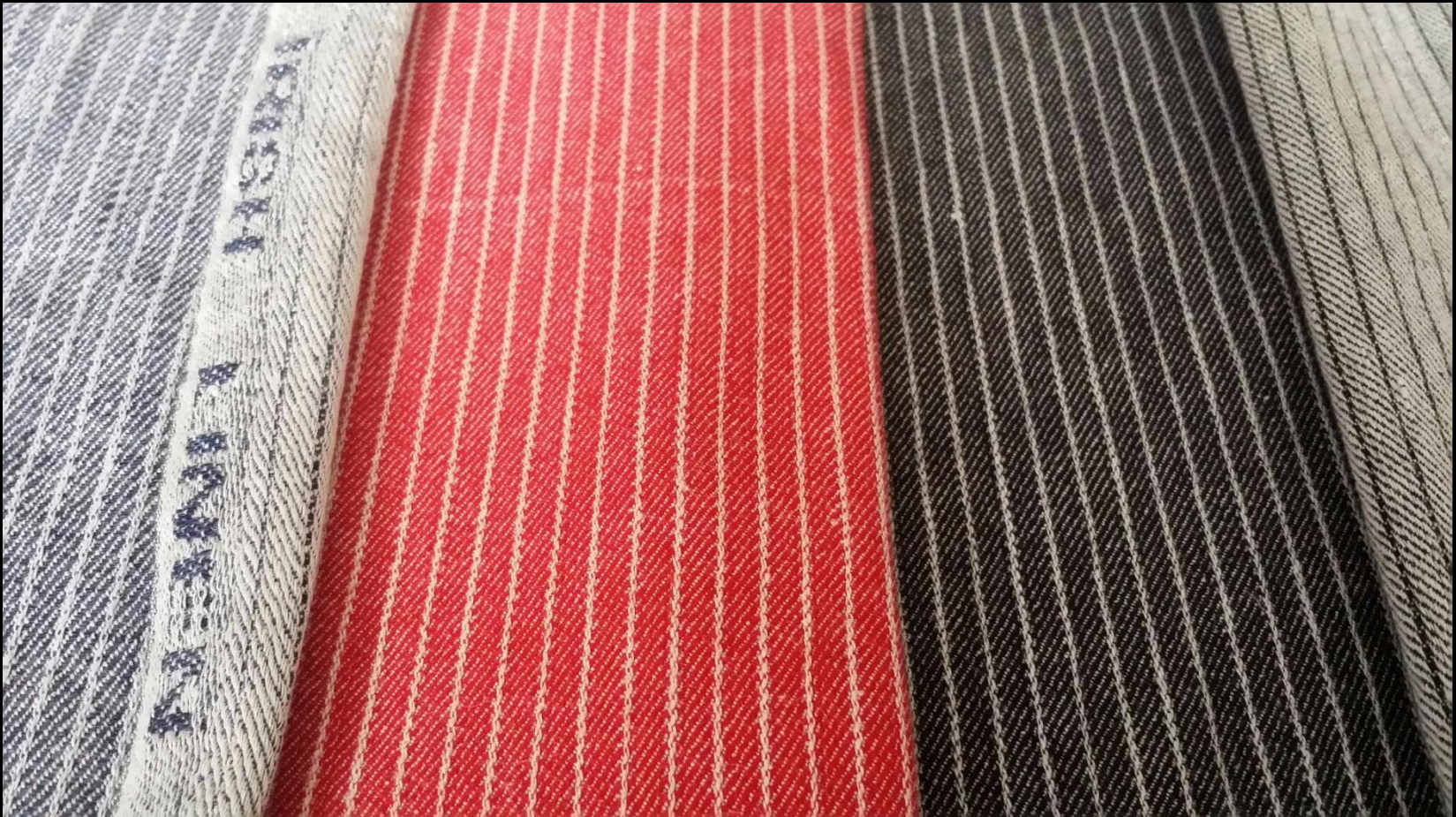


JE1286W
 Bark
 Lt Fawn
 Merino wool/linen

JE1286W
 Bark
 Azure
 Merino wool/linen

JE1859W
 Bark post war stripe
 Merino wool/ linen

JE1286W
 Bark
 Dark Steel
 Merino wool / linen



JE6001W
100% linen

JE873W-pinney-all colours
50% Linen, 50% Cotton
Approx. Weight: 310 gsm
Width: 150cm

Based upon 1940's civilian shirt stripes



JE1615W
40's Deck stripe
Linen

JE1595W
Thread-thru
Linen

JE1499W
Dble P Azkaban
Linen

JE1863W

JE1863W
Regatta stripe
Linen

JE1596W
Previous parallel
Linen



JE1876W
Simple bump
Cotton union

JE1816W
Wilson twill
Merino wool /
Linen

JE1856W
Depp
Linen

JE951W
Keppel twill
Linen (deep sage)

JE1824W
And Betty Twill
Merino wool / linen



JE6666W
Floating wave
Linen / cotton

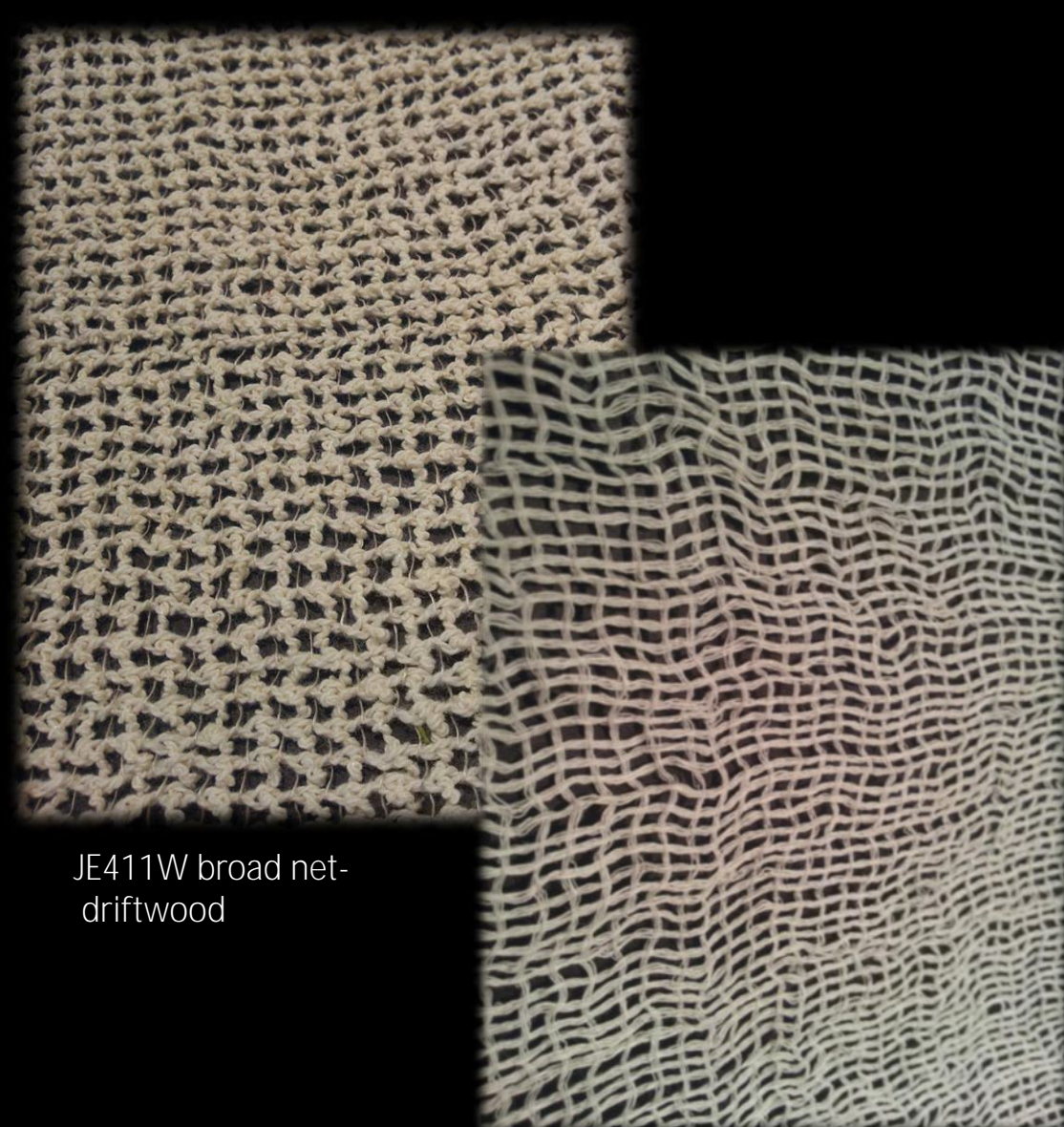


JE1884W
Swirling wave
Linen

These beautiful and unique fabrics require great attention when being woven, and weave very slowly but are just too good to leave out of the range.

To correct the tension on the loom a small section (0.5m) of plain weave has to be woven every 3 metres.

The 3m sections can be adjusted to suit the length of your cutting table, minimum order quantity is 3 x 3m sections



JE411W broad net-
driftwood

JE1267W Linen Mesh



Linen Mesh T-shirt
John England Irish Linen

Emily Akins
Linen Mesh
Over sized T-shirt



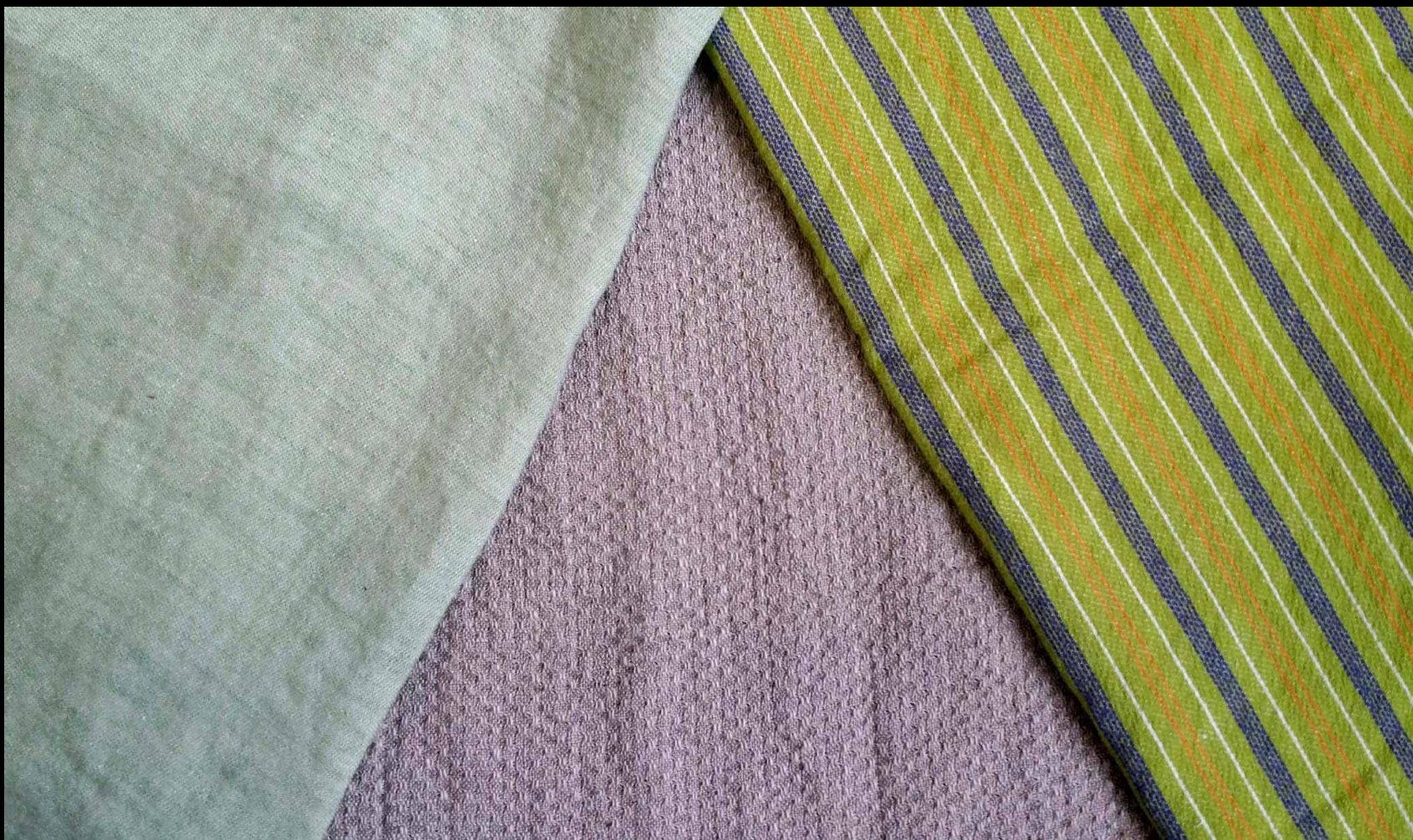
JE1814W
Loopy Dench
Marino wool/
linen

JE1871w
Intense Noise
Face
Cotton / linen

JE1836
Pancake
Celeste
linen

JE1871W
Intense noise
Reverse
Cotton linen

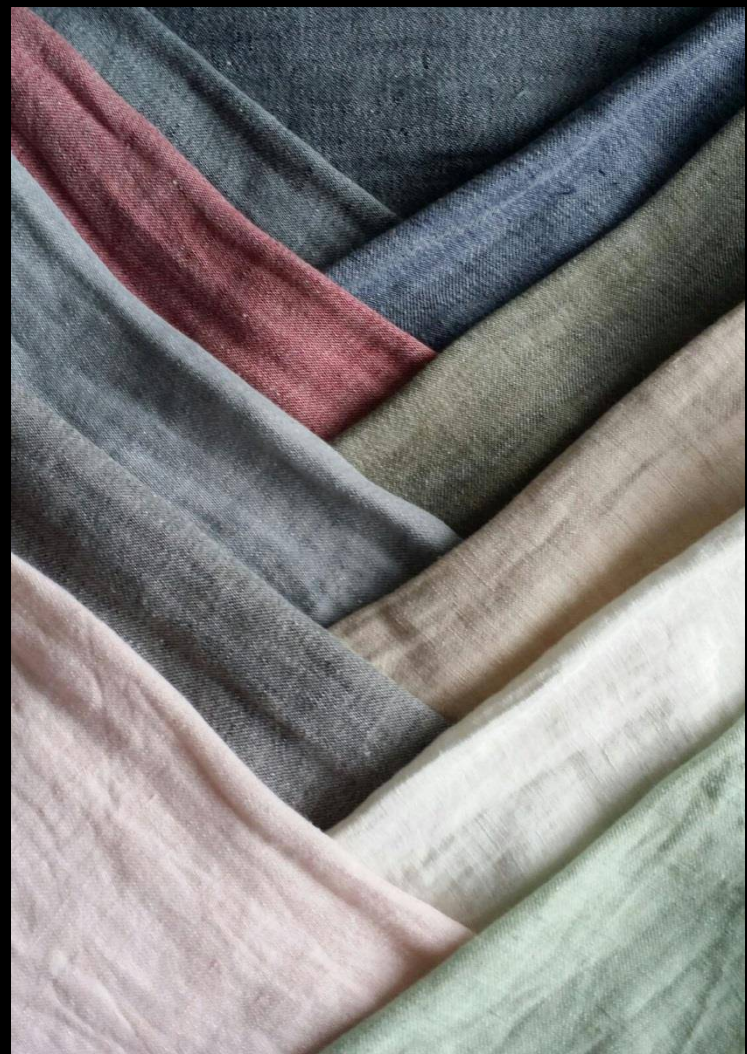
JE1852W
Pink Zero Rib
Linen



JE1583W
Woven colour
Apple green
Linen

JE1201W
Honeycomb
Natural linen

JE1853W
Liquorice
Cotton / linen



JE815W- Woven colours - 100% Linen - Approx. Weight: 225gsm

Based upon 1940's civilian shirt stripes



JE1665W
Pachamama
Linen/cotton

JE1389W
Merge
Linen/cotton

JE1598W
Zap
Linen

JE1577W
Fine Zap
Linen

JE1750W
Liquorice
Linen

JE1598W
Zap yellow
Linen



JE892W - Small cell - 100% Linen - Approx. Weight: 270gsm

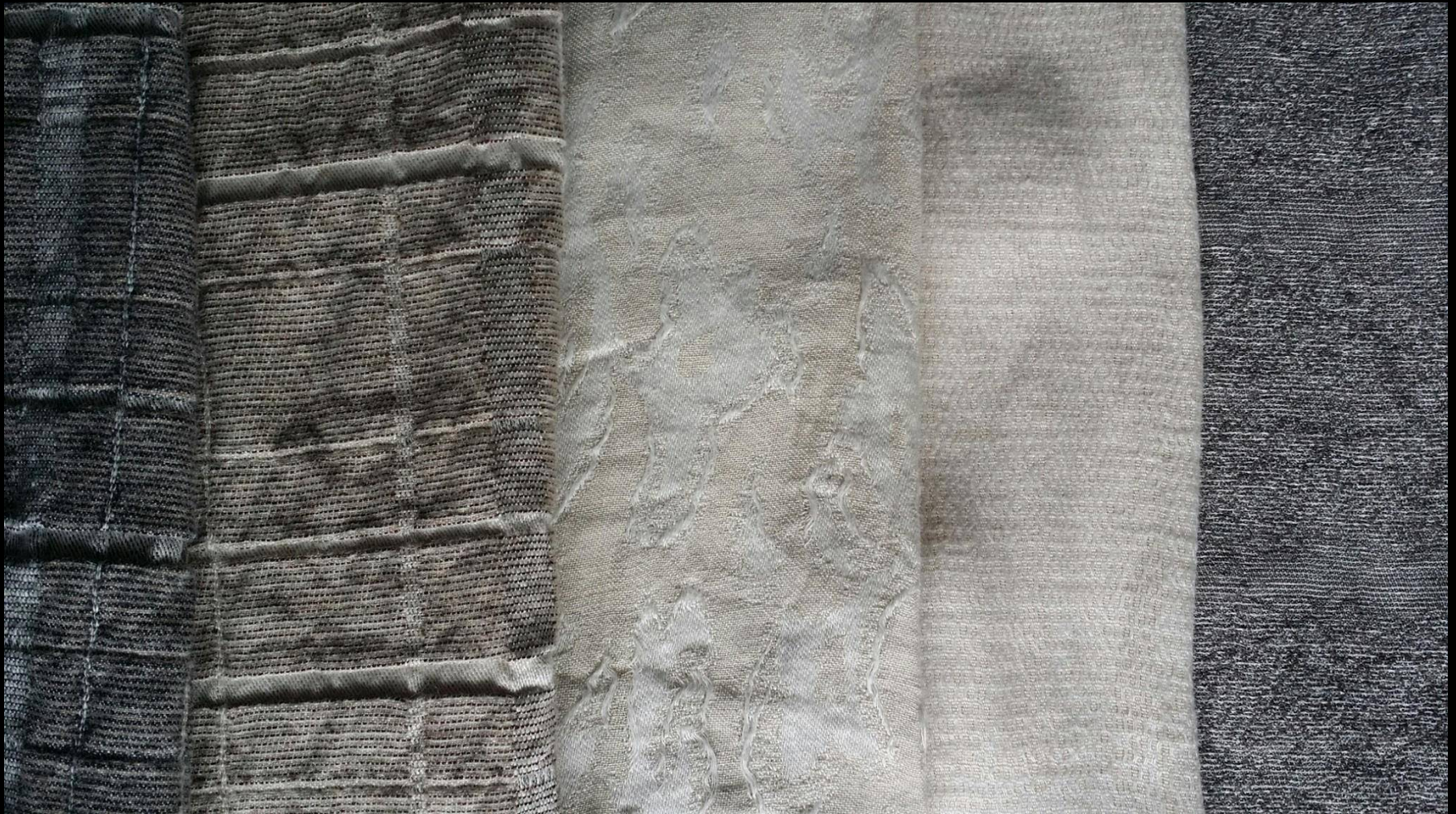
This fabric is woven in four layers, with the option to use different weft yarn for example, colour or fibre in each layer. This fabric/concept was the basis for the 'inside of Red Riding Hoods, Wolf's stomach' for Disney's 'In to the Woods'



JE1868W
Sherbert square
Linen

JE1232W
Rolly leno – Cornflower
Linen

JE1666W
Ballet - Black
Linen



JE1333W
Athlair plaid
Merino / Linen

JE1352W
Reah long
Linen

JE1358W
Honeycomb 11
Linen

JE1337W
Interference
Linen



JE777 - Linear Drill - Linen

JE1602W - horizontal stripe -
Linen - Bare/umber



HERRINGBONE
Available in many colours and scales



JE1752W - Compound stripe - Linen - 4 variations available



JE1226W- Elder - Merino wool face, Linen Reverse – various colours



JE1269W
Denim
Linen/cotton

JE1304W
Denim Fine Twill
Linen /cotton

JE1323W
Denim
Phat Twill
Linen/cotton

JE1270W
Denim
Linen

JE915W
Woven Colour
Twill
18 colours
Linen



JE655S - Jonny Cash - Linen

A well priced, good quality & versatile fabric - Sanforised

info@johnengland.com Tel: UK 028 4062 0400.



JE1020
Heavy weight
Twill check
Approx. Weight: 640gsm

Onebyus
Miles Dunphy
& Elsa Ellis
RCA 2016





JE1339W
Fuzzy
Linen

JE1365W
Wood
Linen

JE1734W
Mojito
Merino wool / linen



JE667W
Stripe Shirting
165gsm
Linen

JE1537W
TF Diamond
276gsm
Linen

JE0875F
TF Diamond
Trad. Finished
Linen

JE1469W
Arabesque
Linen

JE1387W
Squiggle
Linen



JE1396W
Arya Season 5

JE1528W
Arya Season 3

JE1507W
Dogtooth Diamond

Quite often we are asked to weave aging fabric, three from a range of five ages are shown above



JE1606W
Linear wheat
Linen

JE1595W
Previous
horizontal stripe
Linen

JE1599W
Previous twill stripe
Linen

JE1603W
Elephant
Linen



JE1683W - leno blocks - Linen / cotton

The leno section of this fabric is woven in two layers , with dramatic results

The fabric looks particularly good when it is woven in shades of grey



JE1289W
Kinky - Face and reverse
Linen Union

JE1393W
Evanna
Wool / Linen
Game of Thrones

JE1528W
Guardaresh
Linen



JE1297W - Wiggle - linen - available in a variety of colours



JE1255W - Dippity - Linen



JE1363W- pane 3 layer grid
100% Linen
Approx. Weight: 335gsm
Width: 150cm



JE1293
Joyetta
Linen

JE1296
Tracks
Linen

JE1259
Evanna
Linen

JE1262
Chuckle
Linen



JE1228W - Merino wool/Linen - Classic twill



Onebyus
Miles Dunphy
RCA 2016

JE1340W – Contrail – Linen





JE1341W
Scream
Linen or linen union

JE1614W
Ripple
Linen

JE919W
Basket
Linen



JE1593W
Merino wool / linen
3% poly

JE1594W
Stripe scaled Mistletoe
Merino wool/Linen

JE1554W
Mistle
Wool/Linen



JE1327W- farmhouse stripe – Merino wool / Linen



ORGANIC LACE This fabric is available in various weft pick rates. The lower the pick rate the more fluid the fabric becomes (less structural) and the lower the cost. Note 22 p.p.cm shown

JE792W (22 picks Per centimetre) - JE798 (20 picks per centimetre)
JE1221W (16 picks per centimetre) - JE1222W (11picks)



JE1343 - La Rochelle - Linen



JE2125W- (16)' Rose pist fu 'smo



JE8750F- Celtic scroll



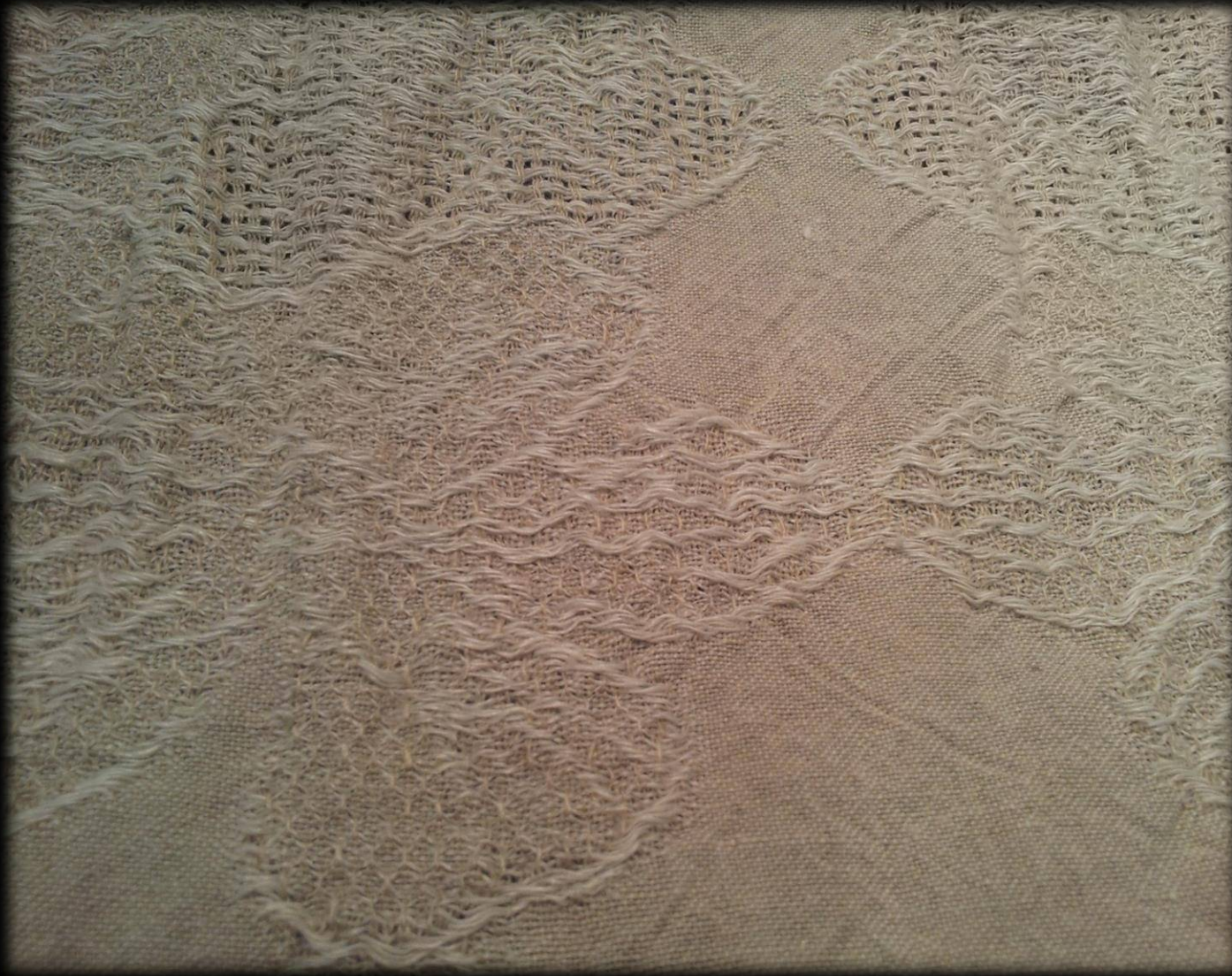
JE1319W
Snuffle (74)
Cornflower
Linen

JE1527W
Smudge
Linen

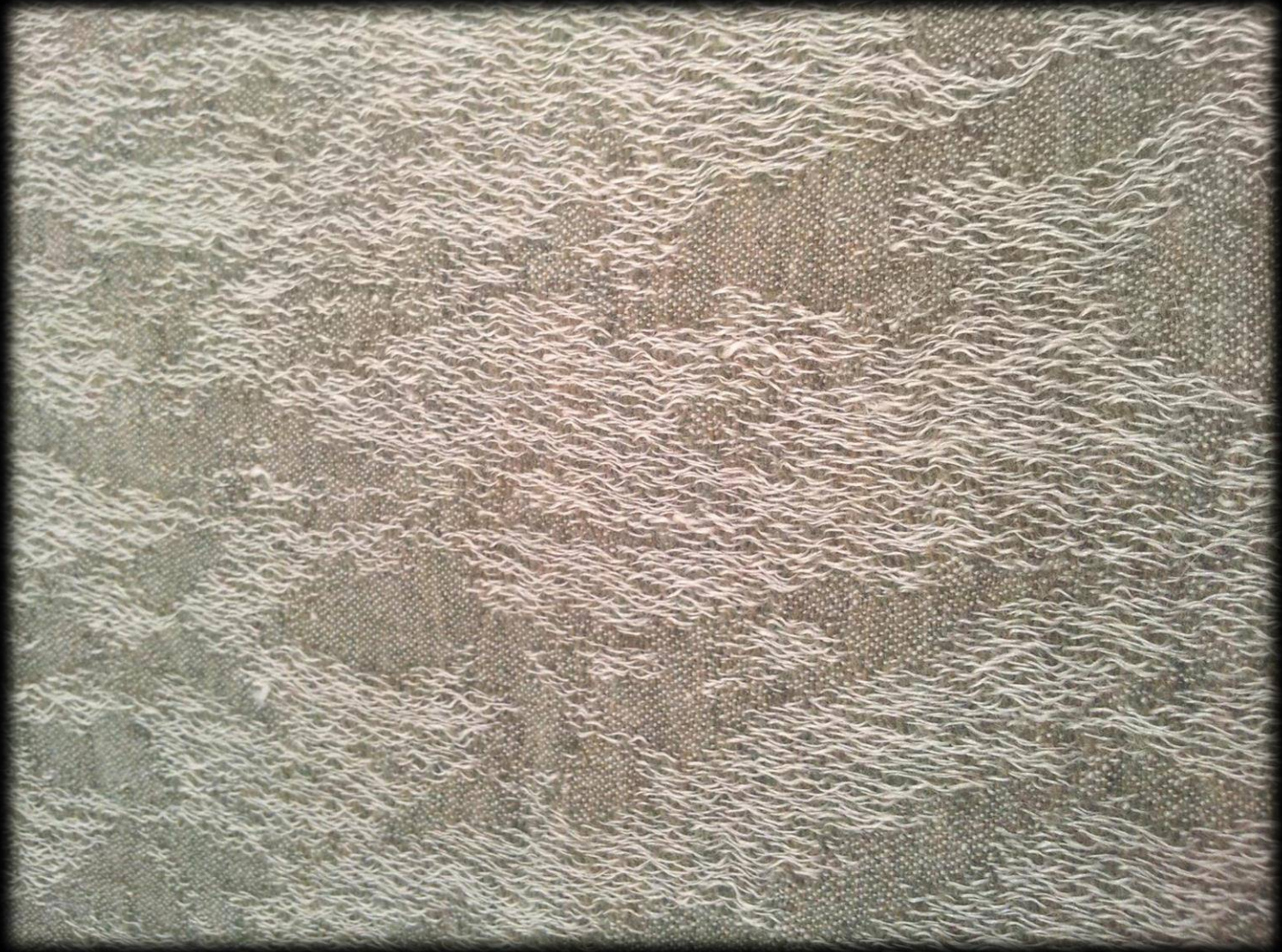
JE1774W
Joyous
Linen



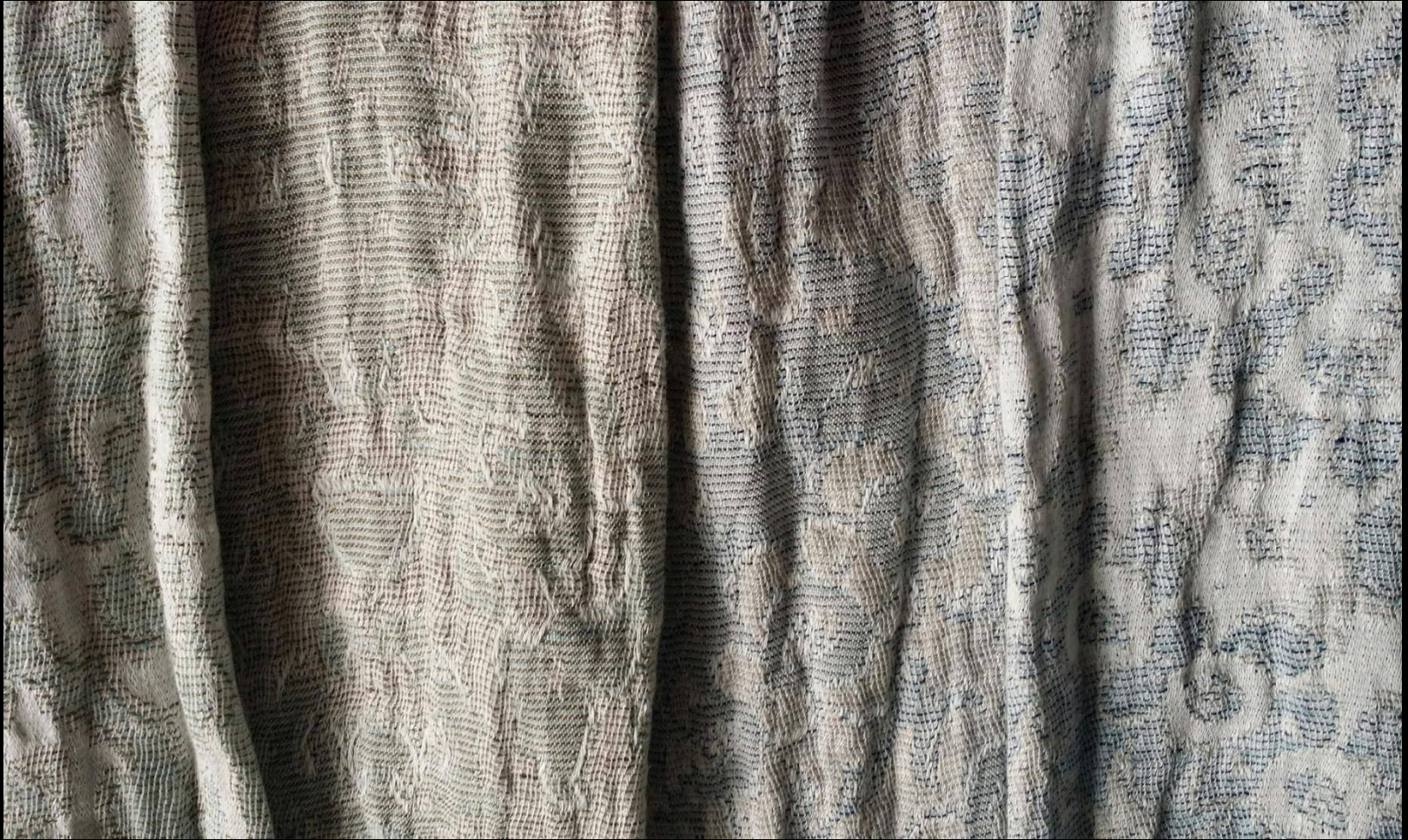
JE1233W- Bumble bee – stone / It fawn - 55% Linen, 45% Lambs wool



JE1282W - large flax flower - Linen



JE1247W - TF4842- champ - Merino / Linen



JE1345W - Joy - Antique green

JE1256W – Tianna antique blue

JE Theatrical– ‘Into the Sea’ & ‘Outlander’ Colour changed to give an aged look



Taking 19th Century designs from our back catalogue, updating , then adding a little bling with
The use of Hi-sheen badge yarn creates this versatile, high impact theatrical fabric.

Want this one or one of your own ask for cupid/shelbourne



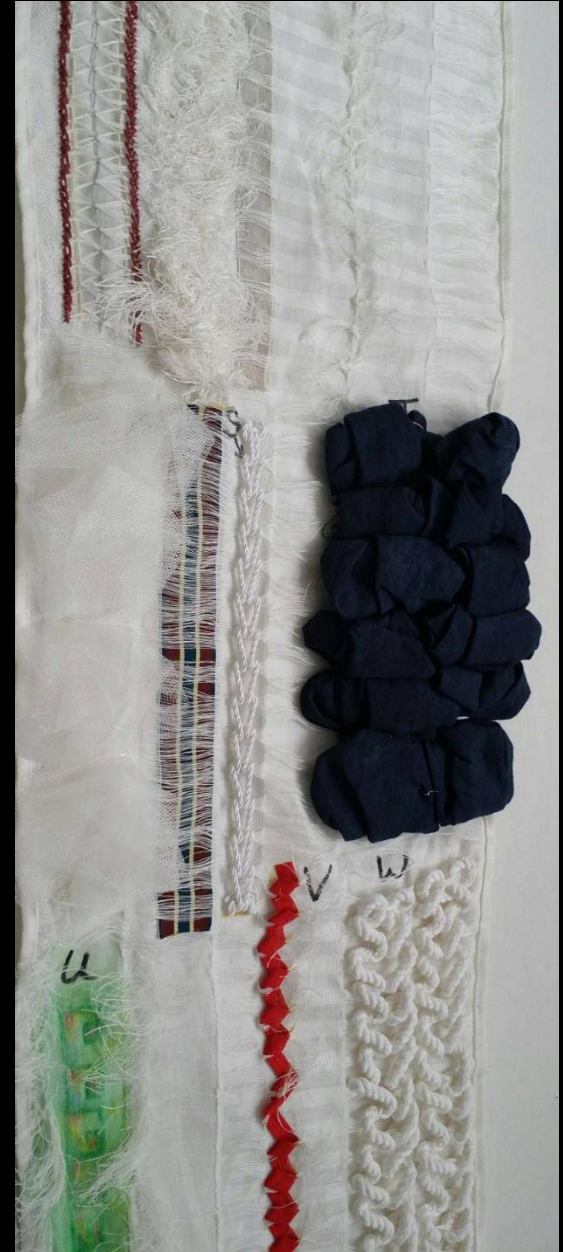
Vintage metallic collection



The edge of a table cloth for the banquet hall scene from 'Dracula Untold'
By using floats we were able to weave this embroidery effect at a fraction of the cost
If we had had to embroider it.



JE Theatrical Floats – the weird and wonderful Floated yarn fabric.
 A unique and easy way to create many effects quickly and economically





Keith
Examining

Garry
Chief Technical Weaver

Weaving in John England

*Visitors to the factory are welcome
Just phone 028 4062 0400 to make
an appointment .



Cecil - Weaver

Call us today on (+44 UK) 028 4062 0400



Ross
Sales Executive
rsemple@johnengland.com

Aidan
Warehouse

Bernie
Sampling

Andy
Production Manager

Part of the John England Team