



# John**England**

---

Linen edit IV



John **England**

JE1923W  
Light weight  
chambray  
100% linen  
Newman





John **England**

JE2771W – Brighton rock - 100% linen - 148cm wide, 207g/m<sup>2</sup>



John**England**

JE999W Plain  
Woven Colour  
100% Irish Linen  
Width 145cm





John**England**

JE1970W  
Lydia  
Irish Linen  
Single Damask



John **England**

JE2033W Linen / cotton Dog tooth 148cm wide



John **England**

JE2034w Dogtooth - 50% Lambs wool, 50% Linen Width 148cm Tortoise / light fawn Black/White



John **England**

JE2060W  
Huit - Inspired by  
Jackson Pollock  
Linen union  
153cm wide





John **England**

JE2190W

Cracked

50% lambs Wool

50% linen

142cm wide





John**England**

JE2188w – Negative – Linen responsibly sourced cotton union 150cm wide



John **England**

JE2189W

Splat

100% Linen

148cm wide





John **England**

JE2191W  
Wing Cellular  
100% Irish  
Linen





John**England**

---

JE2188W

Negative Space

52% linen, 49% Responsibly  
sourced cotton

150cm wide

Various colours available





John **England**

JE2214W – Kabul Stripe – 100% Irish linen – 135 – 150 wide



John **England**

JE2215WP Darri Stripe, **Pressed**, 100% linen



John **England**

JE2215WP  
Darri Stripe,  
**Soft Washed** ,  
100% Irish linen







John**England**

JE2216W Randomsit, 100% Linen 148cm wide



John**England**

JE2226W – La La Allover, 100% linen, 148cm wide



John **England**

JE2227W Daisy Dukes 100% Linen

John **England**

JE2228W Plough 100% Linen 150cm wide





John**England**

JE2229W

Faking it

Responsibly sourced  
cotton/linen union



John **England**

JE2217 – Sparrow Stripe – Sage – 100% Irish linen



John **England**

---

JE2218W · La La Leno Stripe · 100% Linen · Straw/cloud



John **England**

JE2218W ·  
La La Leno  
Stripe ·  
100% Linen ·  
Navy/white ·  
Cloud/white ·  
Natural white







John **England**

JE2219W ·  
Tinker ·  
100% Linen





John **England**

JE2220W ·  
Dibley Stripe ·  
100% Linen  
Raw Umber ·  
Chilli · Smoke





John **England**

JE222W · Knit-Twit · Lambs wool /linen development



John **England**

JE2223W Fireworks – 100% linen – 145cm wide



John **England**

JE2224W – Gelato – 100% Irish linen – 150cm wide



John **England**

JE2225W Large scale Petal - Lambs Wool / Linen



John **England**

JE2226W

La La

Allover

100%

Linen



John **England**

JE2233W  
Loopy Loo  
100% Irish Linen  
153cm wide





John **England**

JE2232W

Asphalt

100% Irish Linen

153cm wide



JE2234W Loopy –Lo 100% Irish Linen  
– 153cm wide o -



JE2235W Kirk St, 100% Irish Linen – 153cm wide

John**England**



JE2237W Spock St,  
153cm wide – 10% Irish Linen

John **England**



JE2237W Kirk St,  
153cm wide – 10% Irish Linen





John **England**

JE2239W Optical Diamond Lambs Wool & linen 3D textured fabric



John **England**

JE2240W Subtle Inca 100% linen

John**England**



JE2241W  
Grande Heart Contours  
100% Irish Linen  
148cm wide



JE2242W Breeze, 100% Irish Linen, 151cm wide



John**England**



JE2244W Dimble 100% Irish Linen



JE2243W Hives of Dots.  
Lambs wool/linen





John **England**

JE2247W Royal Victoria Ticking – 50% Linen 50% Responsibly sourced cotton





John **England**

JE2248W Wormwood Scrubs Cotton Linen



John**England**



JE2249W Strangeways  
Linen Union



JE2251W Shepton Alibi  
Responsibly sourced  
50/50 cotton & Linen Union



JE2250W  
Bodmin Bars  
Responsibly sourced  
50/50 cotton & Linen Union





John **England** JE2253W Tissue Knit, 49% Lambs wool & 51% Irish linen, 138cm wide

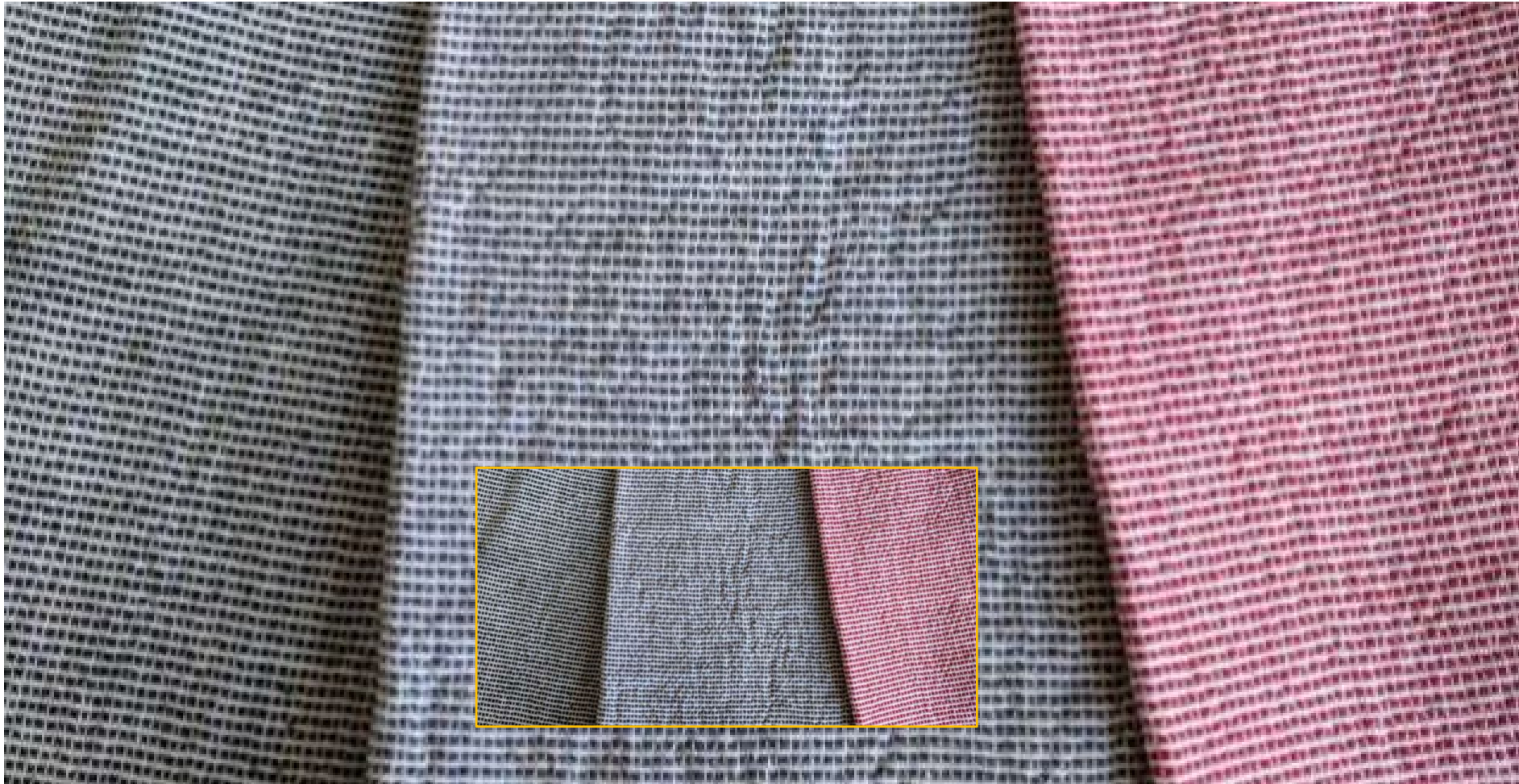


John**England**

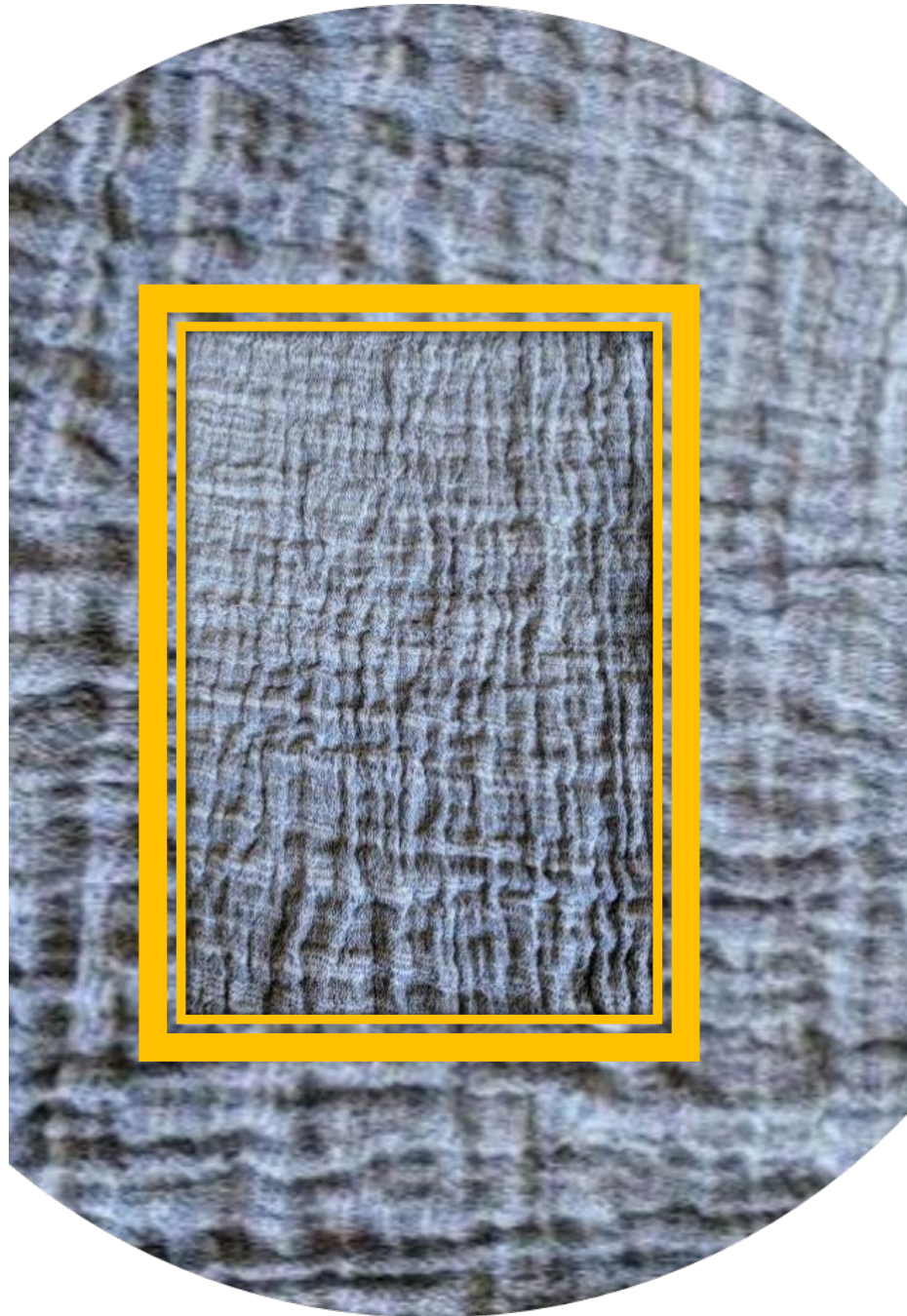


JE2257 , Sherlock, 49% Responsibly sourced cotton 51% Irish Linen, 145cm wide

# John **England**



JE2257W Windows, 51% Linen 49% recycled cotton, 145cm wide



John **England**

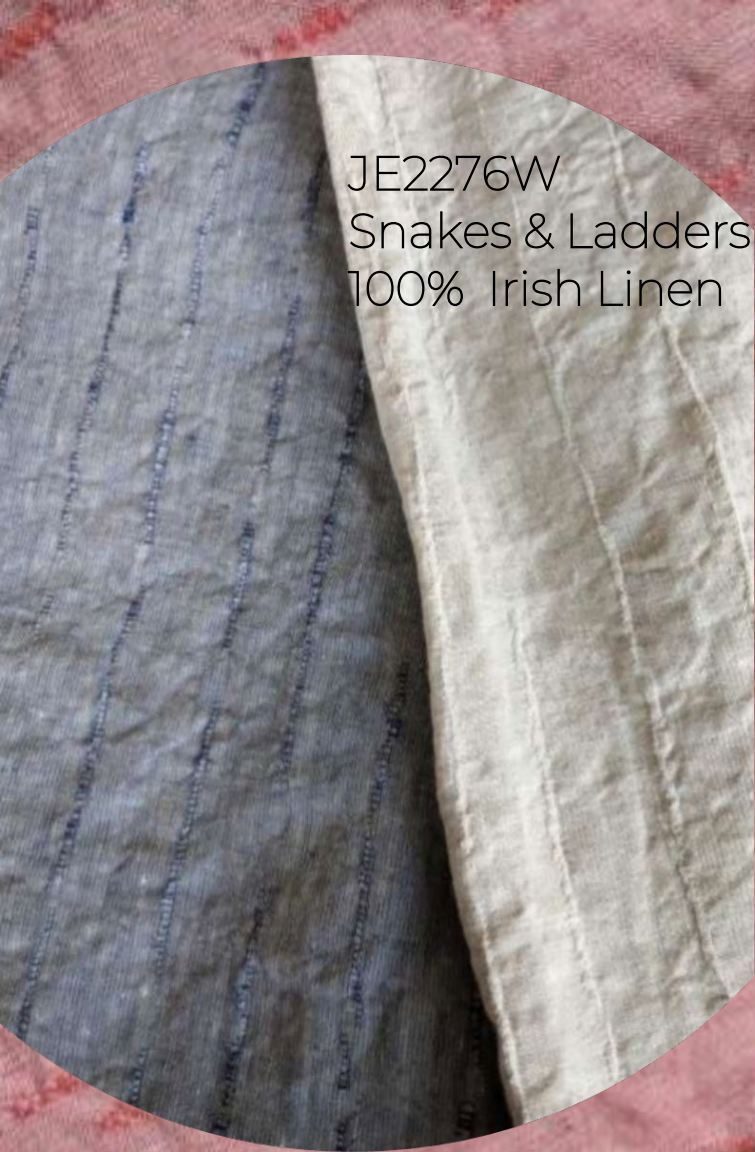
Left  
JE2258W  
Huckaback  
100% Irish linen  
Many colours  
153cm wide

Right  
JE2265W  
Obscurer  
100% Irish Linen  
145cm wide



John **England**

JE2268W  
Confusion  
100% IrishLinen



JE2276W  
Snakes & Ladders  
100% Irish Linen



JE2273W  
Dribbles  
100% Irish linen



John**England**



JE2277W – Tic tac toe, Irish Linen/responsibly sourced cotton



JE2278W Fats Domino, Irish Linen/responsibly sourced cotton



John **England**

JE2287W Whistable by Evie  
100% Irish Linen Fab fabric  
by new talent 15 year old  
Evie Coldwell  
Too good to miss!





JE2292W Bold Gatsby Linen/cotton



JE2291W Cute Gatsby Linen / cotton





John **England**

JE2294W Pylon 100% Linen

John**England**



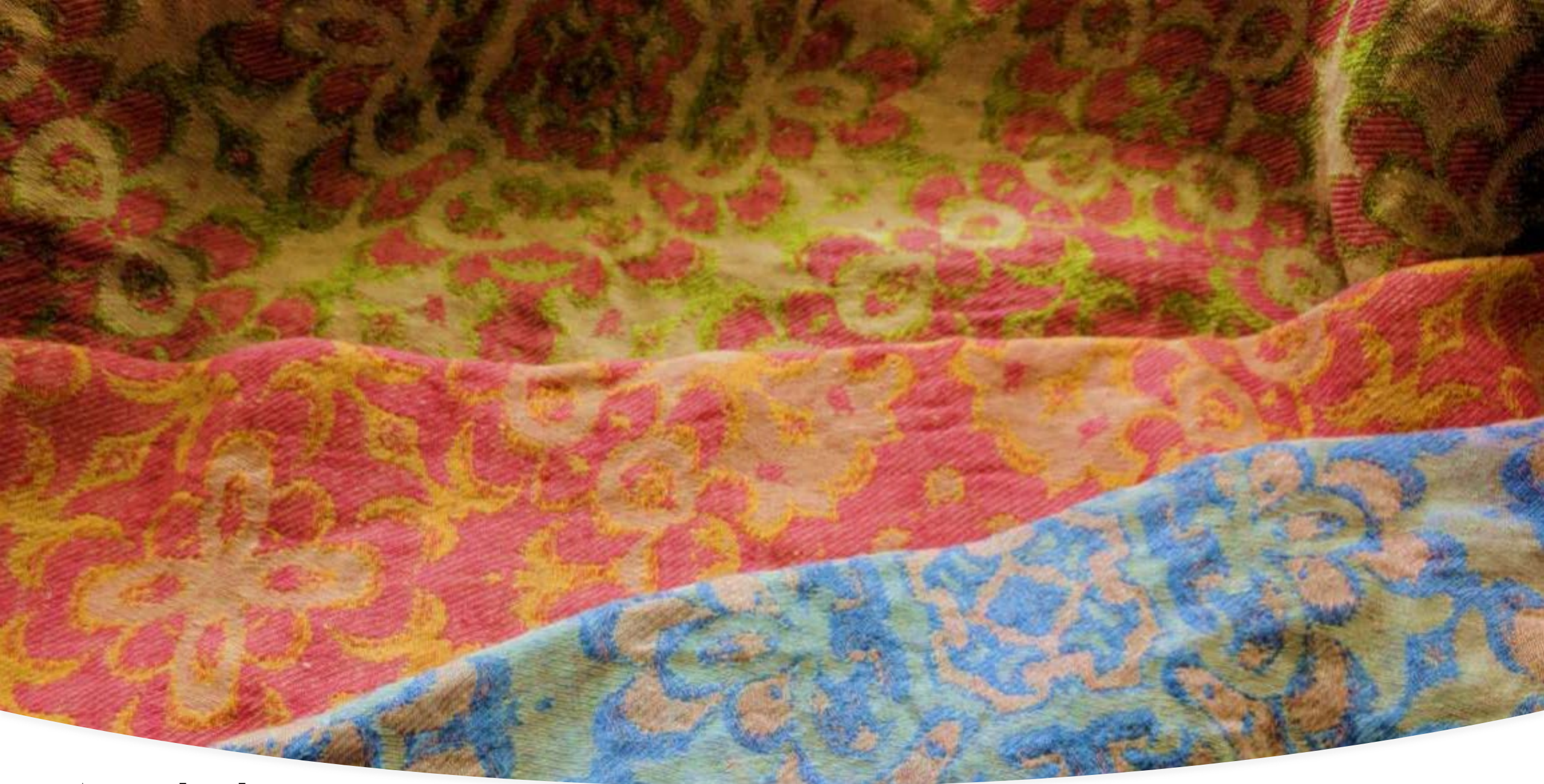
JE2297W  
Brimham Roacks  
51% Irish Linen  
49% Lambs wool  
140cm wide



John **England**

JE2298W  
Wesendenhead Moor  
53% Irish Linen,  
47% Responsibly  
sourced cotton





John **England**

JE2303W DISCO INFERNO – Joy, 100% linen, 148cm wide



John **England**

JE999W Plain Sateen – Woven Colour, 100% linen Width 145cm





John **England**

JE2305W Uncle Albert  
Large Stripe  
50% lambs wool 50% linen  
145cm wide

JE2308W Wee Albert  
Narrow stripe  
50% lambs wool 50% linen  
145cm wide



John **England**

JE2306W Woolly Fats Domino in fine lambs wool and Irish linen

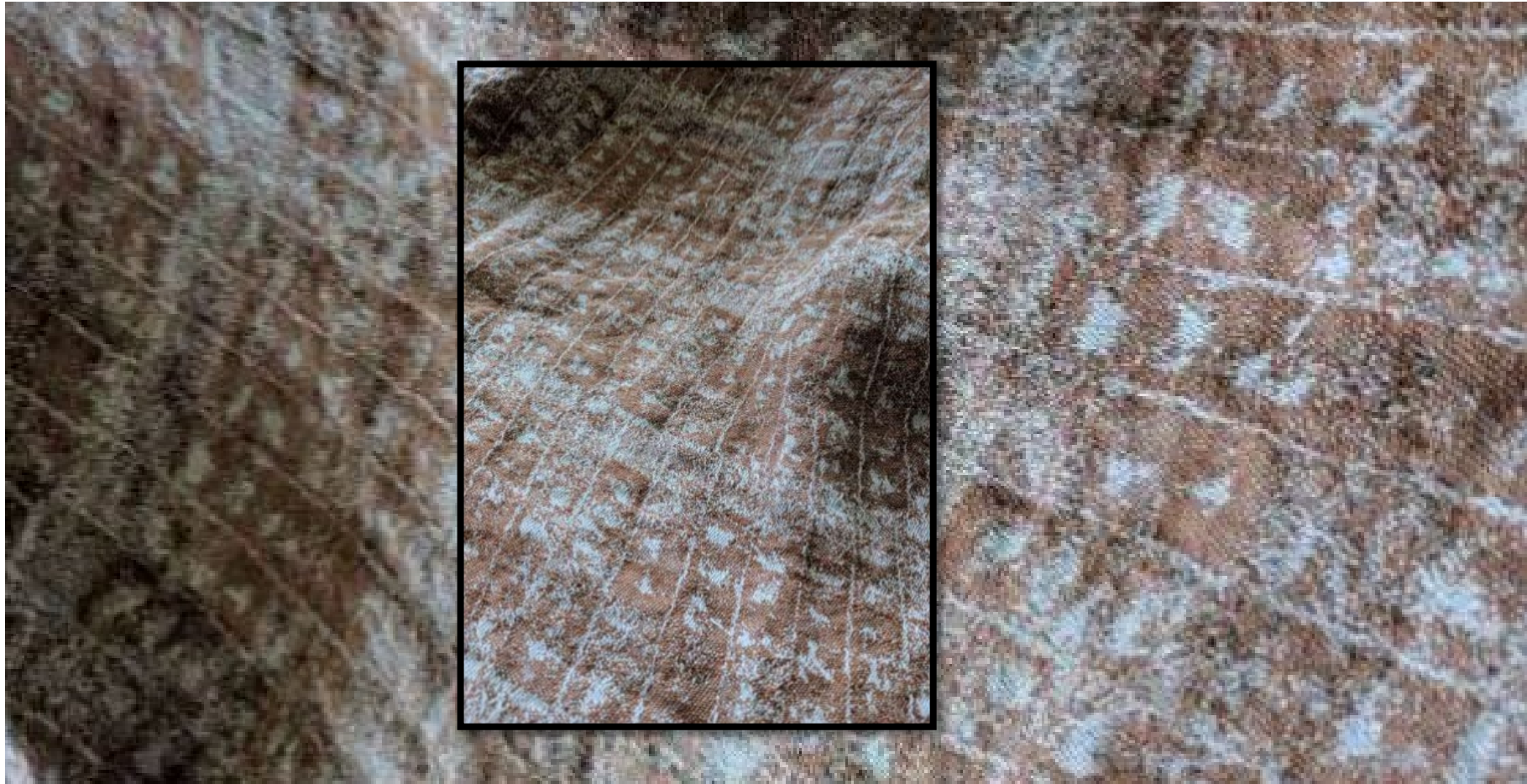


John**England**

JE2310W Versailles Lambs wool / linen

John **England**

JE2312W Smudgies 100% Irish linen, 155cm wide



John **England**



JE2313W SMOKEHOUSE 100% Irish Linen



JE2797W

itsy bitsy,

100% Irish linen



John**England**



JE2314W - Broken Heart, 100% Linen 148cm wide

John**England**

---

JE2797W

itsy bitsy,

100% Irish linen





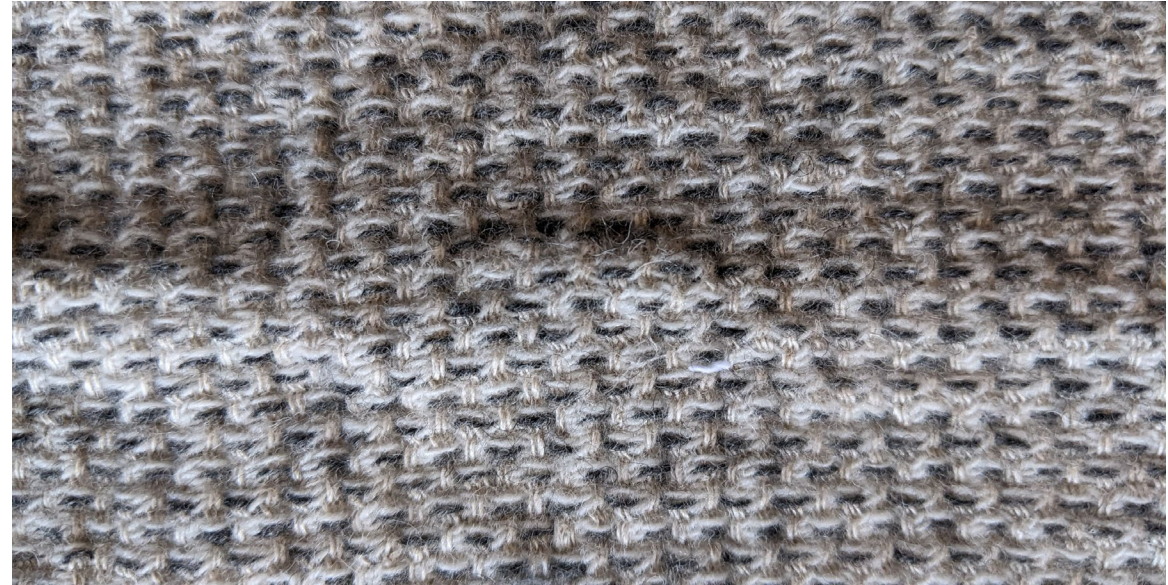
John **England**

JE2360W Tweed basket 51% Lambs wool, 49% Irish Linen, 138cm wide – Fern green



John**England**

JE2362W Spinacer tweed  
51% Wool 40% Irish linen - culloden



Je2361W Dash Tweed  
51% Wool 40% Irish linen  
White/grey



John **England**

JE2793W

5mm dog tooth

52% Irish Linen

48% Responsibly  
sourced cotton

148cm wide





John **England**

Ask to change  
the colour of  
Your favourite...





**P.T.O.**

John **England - Wood - FACE**



John **England** - **Wood reverse**

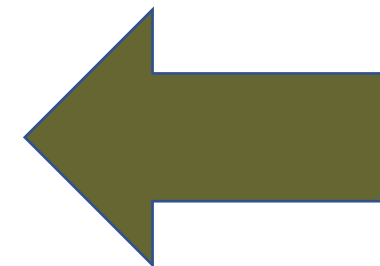
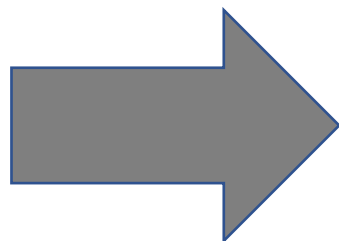


John **England**

JE1231W – Roly Poly, 2 layer marshmallow weave, 100% Irish Linen

John **England**

JE2160 Oxytex, Black or Sage, 163cm wide

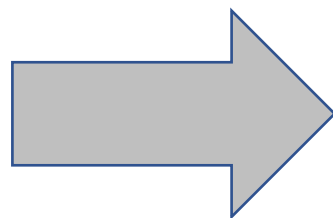




John **England**

JE2164 Eco hopsack

Grey, 50% Linen 35% Recycled cotton, 15% poly





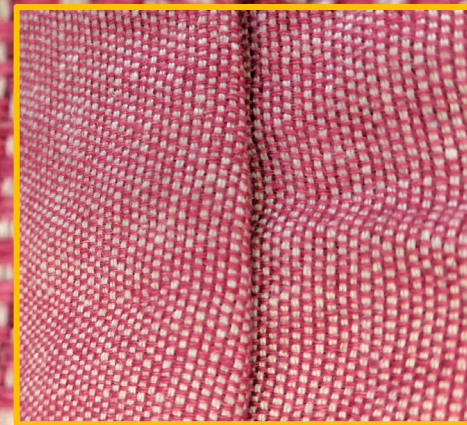
John**England**

JE2165

100% linen (Rosso)

148cm wide

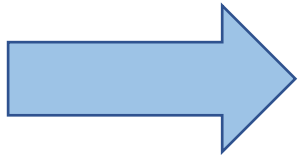
Double dutch





John**England**

JE2166  
Sonno  
2 Layers  
51% Irish Linen  
49% Lambs wool  
129cm wide





## John**England**

JE2168  
Eko Sonno baum  
2 Layers  
51% Linen  
34% recycled cotton  
15% Polyester

Washed 118cm wide  
- unstretched





John**England**

JE2169  
Doing time – stripe

50/50 Irish linen / Responsibly source cotton  
union



John **England**

---

Fronde  
lighter weight development

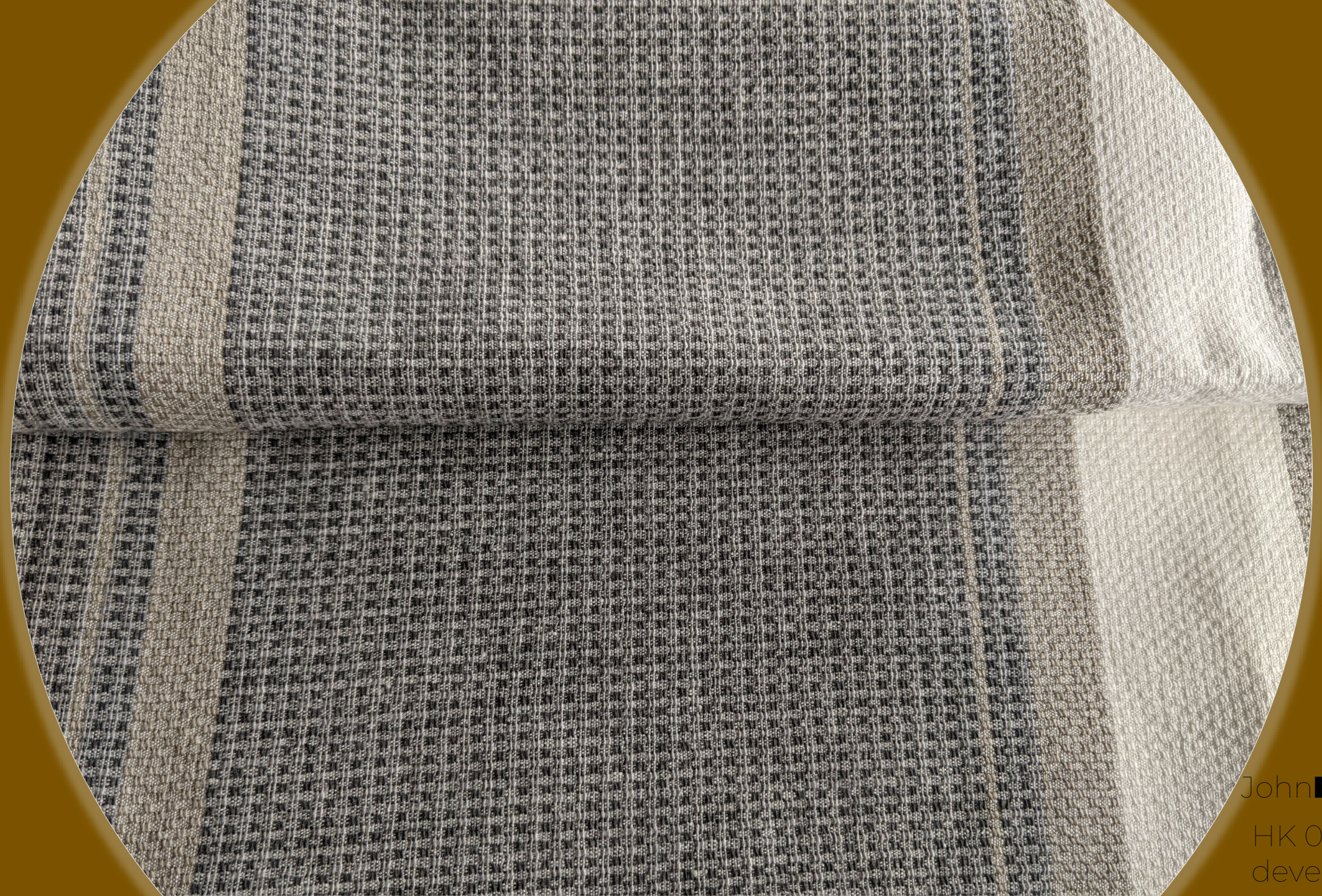


John **England**

HK 056 in development

A circular inset image showing a close-up of a textured fabric. The fabric has a grid-like pattern of small, raised rectangular sections. The texture is highly detailed, showing individual fibers and the way they are woven or knitted together. The lighting is soft, highlighting the three-dimensional quality of the texture. The background of the entire image is a solid, dark olive green color.

John **England**  
HK 056  
in development



John **England**

HK 056 in  
development



## John **England**



Here at John England we understand that you need to actually touch the fabric before you buy .

Here's Bernie in an uncharacteristically tidy sampling department – she's usually buried in swatches

## John **England**

54 Scarva Road

Banbridge

Co Down

BT32 3RR

028 4062 0400

[info@johnengland.com](mailto:info@johnengland.com)