



John **England**

& JE | **Theatrical**



Weaving in Co. Down
Northern Ireland

Linens and linen fusions
Edition I (SST)



Flax field – Growing Flax is carbon negative

John **England**



Please note that the photographs maybe shown in a slightly different shade than the original fabrics.

Up to 5 swatches may be requested free of charge, so that you can make sure you order the correct fabric.
info@johnengland.com

To create your own bespoke designs email
info@johnengland.com Tel: UK 028 4062 0400



John**England**

REF:JE873W

Name: **Pinney,**

Fibres: 52% Irish linen, 48%
Responsibly Sourced cotton,

Width: 163cm wide,

Weight: 290gsm





John **England**

JE1974W

Floated herringbone

- 100% linen
- 228gsm
- 145cm wide

info@johnengland.com Tel: 028 4062 0400



John**England**

REF: JE1965W

Name: Morse Code (base dotty)

Fibres: 51% Irish linen 49%
responsibly sourced cotton

Colour: Navy

Washed width: 160cm wide,

Weight: 214gsm





John **England**

JE1814W
Miles Twill

- 55% linen
- 45% Lambs wool
- 137cm wide

info@johnengland.com Tel: 028 4062 0400



JE1769W

Guildhall flower

100% linen

Smoke /Straw

John **England**



JE1970W

Lydias flower

100% linen

Nude/cloud



John **England**



JE1735W

Tweed,

55% Irish linen 45% Lambs wool.

Approx 145cm wide

John **England**



Tel: 028 4062 0400

info@johnengland.com

9

JE1221W 16
Organic lace
100% Irish linen
Grey, Chilli or
white

1
0

John **England**

Ref: JE1953W

Name : **Tulloch** HB,

Fibres: 100% Irish Linen

Weight: light weight,

Colours: oyster, plus various colours



John **England**



REF: JE8/2 1923wp

Name: **Chambray**

Colours Shown : Bare, Blush, Ocean and Smoke

Fibres: 100% Irish Linen,

Widths: 300 cm and 150cm

Weight: 280gsm

Also available in a lighter weight, JE8/1 2009WP fine yarn, 100% Irish linen, 300cm & 150cm wide 180gsm

John **England**



JE2107/8W

Marble

Oyster, natural

50% linen 50% cotton

150cm wide

John **England**



REF / Name: JE2039W - Dolly mixture,
Fibres: 100% linen,
Width: 140cm Weight : 239gsm

REF / Name: JE1906W - Taunton Stripe
Fibres : 51% responsibly sourced cotton,
49% Irish linen,
Width : 140wide Weight: 251gsm
Colour Shown: black/ecru

info@johnengland.com Tel: 028 4062 0400

John **England**



Ref: JE1315W

Name: **Kinson Herringbone**

Fibres: 45% wool, 55% Irish linen,

Width: 170cm

Weight: 312gsm



John **England**



REF: JE867W

NAME: **Small Herringbone**

Fibres: 50% Irish linen 50%
Responsibly sourced Cotton

Colours shown : navy

Width: 163cm wide ,

Weight: 290gsm

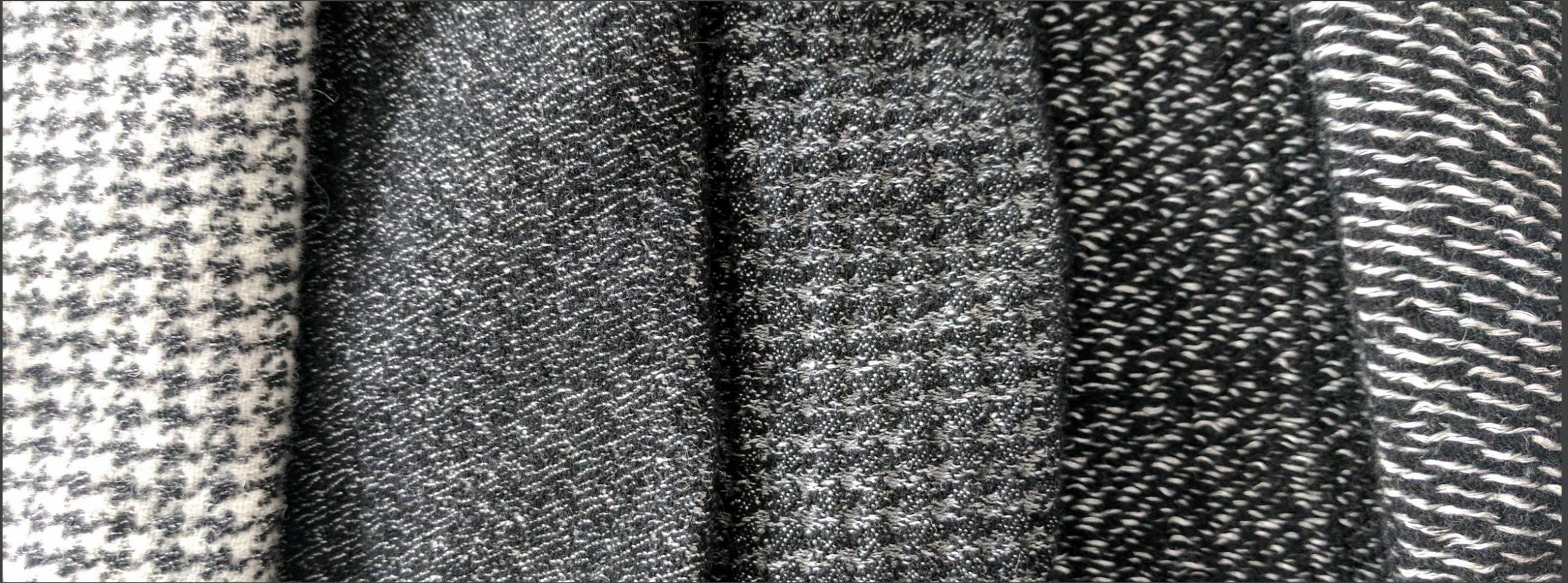


John **ENGLAND**

JE1956W

1956 Frogmore Hall

83% Irish Linen, 10% Lambs wool, 7% poly
150 wide



JE2034W Hounds tooth
White/black

JE2034W Hounds tooth
Grey/black

JE2033W - 3D houndstooth

JE2106WOF side 1 and 2

John**England**

50% Lambs wool Fusion with Irish Linen
JE2034BLK

Hounds tooth

Grey black

info@johnengland.com Tel: 028 4062 0400





JE2062W **broken soul**, 51% linen 49% Responsibly sourced cotton, 145cmW
263gsm

John**England**



John**England**



JE2277W 9mm squares

Tic Tac Toe

50% Irish Linen,
50% Recycled cotton
Colours shown: Light
grey & green
150cm wide

JE1919W 9mm squares

Ginghamstyle,

Navy, fuschia, 50%
Irish Linen 50%
responsibly sourced
cotton



John England



REF: JE2240W

Name: Subtle Inca

Fibres: 100% Linen

Width: 150cm

Weight: 222gsm

info@johnengland.com Tel: 028 4062 0400



John **England**

JE1333W

Athlair

- 50% Lambs Wool, 50% linen
- 135cm wide, Or 300cm wide
- 423gsm

info@johnengland.com Tel: 028 4062 0400



John **England**



JE1952W

Tulloch stripe

100% Irish linen

155cm wide

186gsm

John**England**

info@johnengland.com Tel: 028 4062 0400

JE1868W Navy
Heavy huckaback
Coloured weft
100% linen
170cm wide
309gsm





John **England**

JE0874 Plain - Single **Damask** Quality
63 threads per cm (202 per inch) and 210gsm

JE0975 Plain - **Double Damask** Quality
80 threads pre cm (235per inch) and 220gsm

Plain **Sateen** weave structure
100% Pure Irish Linen

Irish Linen **Imperial Damask** is woven on request.
It is the very finest quality.
It is 92 Threads per cm (235 per sq inch) 210gsm

Sustainably finished
available in the Following widths
175cm
300cm

Used in table cloths and napkins for Royalty and
Embassies around the world.

John **England**



JE1907W Kyoto Stripe, 50% Irish Linen 50%
recycled cotton union, Black & Ecrú
Width 165cm 209gsm

info@johnengland.com Tel: 028 4062 0400



- JE1861W
- Ticking stripe with HB
- 55% COTTON 45% LINEN
- 155CM wide
- 225gsm

John **England**

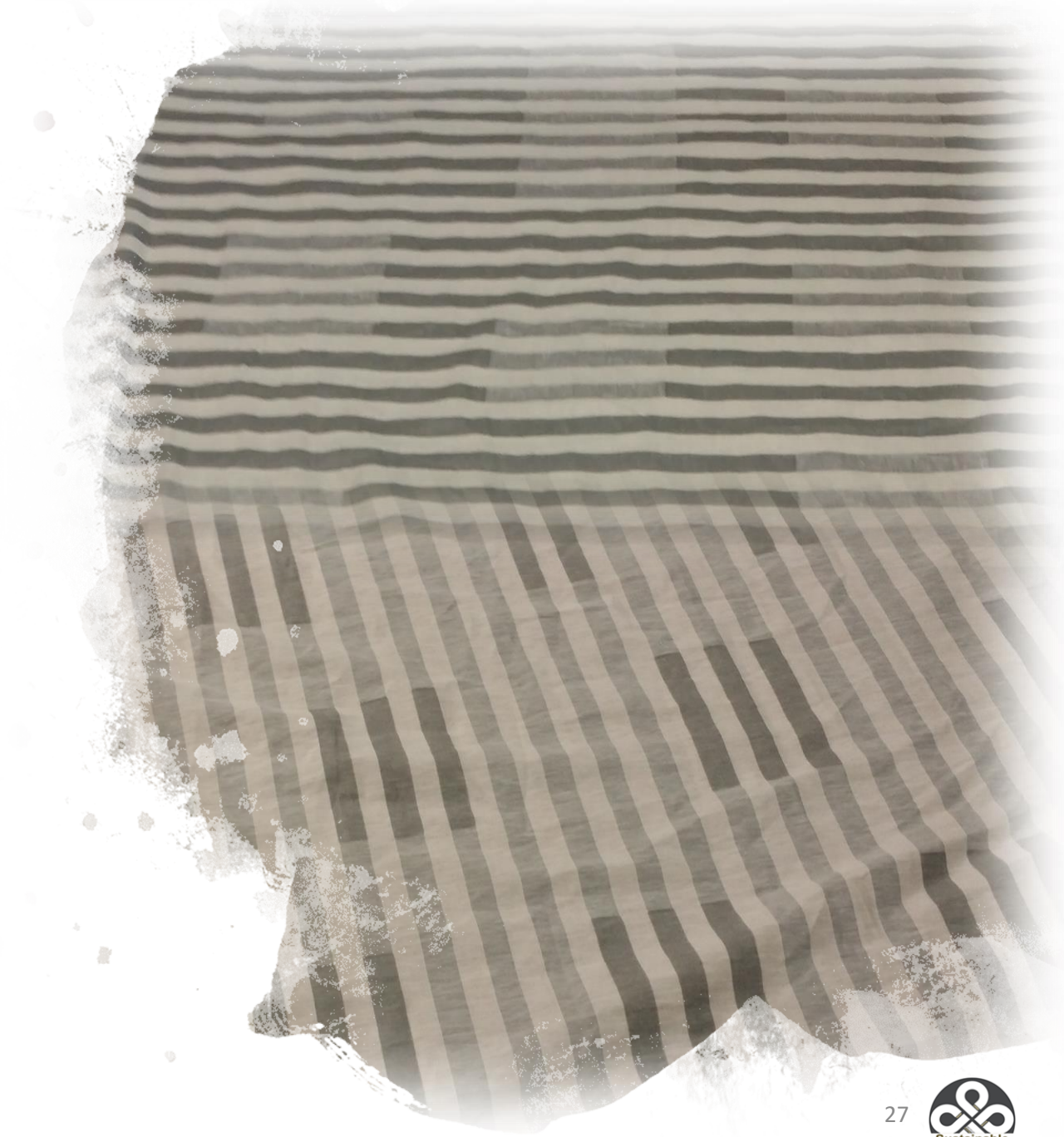


LARGE REPEAT

JE1978W

Okinawa deck chair stripe

- 100% linen (linen cotton available)
- 188gsm
- 154cm wide



John **England**



REF: JE2027W

Name: Pucker

Fibres: 98% Irish linen,
2% Responsibly sourced cotton

Width: 153cm wide

Weight: 333gsm

Colours: Blue or Oyster

Others available on request

2
9

John **England**



JE2077W – Copenhagen Line and flower
100% Irish linen
217gsm & 148cm wide
Grey & Celeste shown

info@johnengland.com Tel: 028 4062 0400

John**England**

JE2028W

What the Fleck'

- 51% Lambs Wool 49% linen
- Navy, mocha, suede
- 138cm wide
- 389gsm



3
1

JE2053W

Blue Victoria Rocks

- 97% linen 3% cotton
- 162gsm
- 140cm wide

John **England**

JE2080W

49 shades of grey,

- 100% linen,
- 212gsm,
- approx. 140cm wide





JE2061W Subtle Inca, 51%linen 49% lambs wool. 140cm wide, 307gsm

John England



JE2062W Vintage Blazer , 70% linen 30% cotton 140cm wide



John **England**

JE2063W

Inca Seas (navy)

- 51% linen, 49% cotton
- 138cm wide,
- 236gsm

JE2096W

Depp stripe (red)

- 100% linen
- 153cm wide
- 204gsm

JE2084W Kissing circles (white)

- 51% Linen, 49% cotton,
- 254gsm,
- 144cm wide



John**England**

JE2078W (left)

Peripheral gaze

- 100% linen , chilli
- 235gsm,
- 152cm wide

JE2065W

Thatcher

- 51% Linen 49% recycled cotton
- 237gsm,
- 140cm wide

JE2069W (Right)

Bean repeats

- 100% Irish Linen
- 214gsm
- 148cm wide



John**England**



JE1891W

Gateaux (left)

- 70% linen 30% cotton
- 250gsm
- 140cm wide

JE2070W

Running stitch (right)

- 97% linen 3% cotton
- 221gsm
- 152cm wide



John **England**

JE2073W

Itza

- Lagoon
- 51% linen, 49% merino wool
- 135cm wide
- 352gsm



John **England**

REF: JE2060W

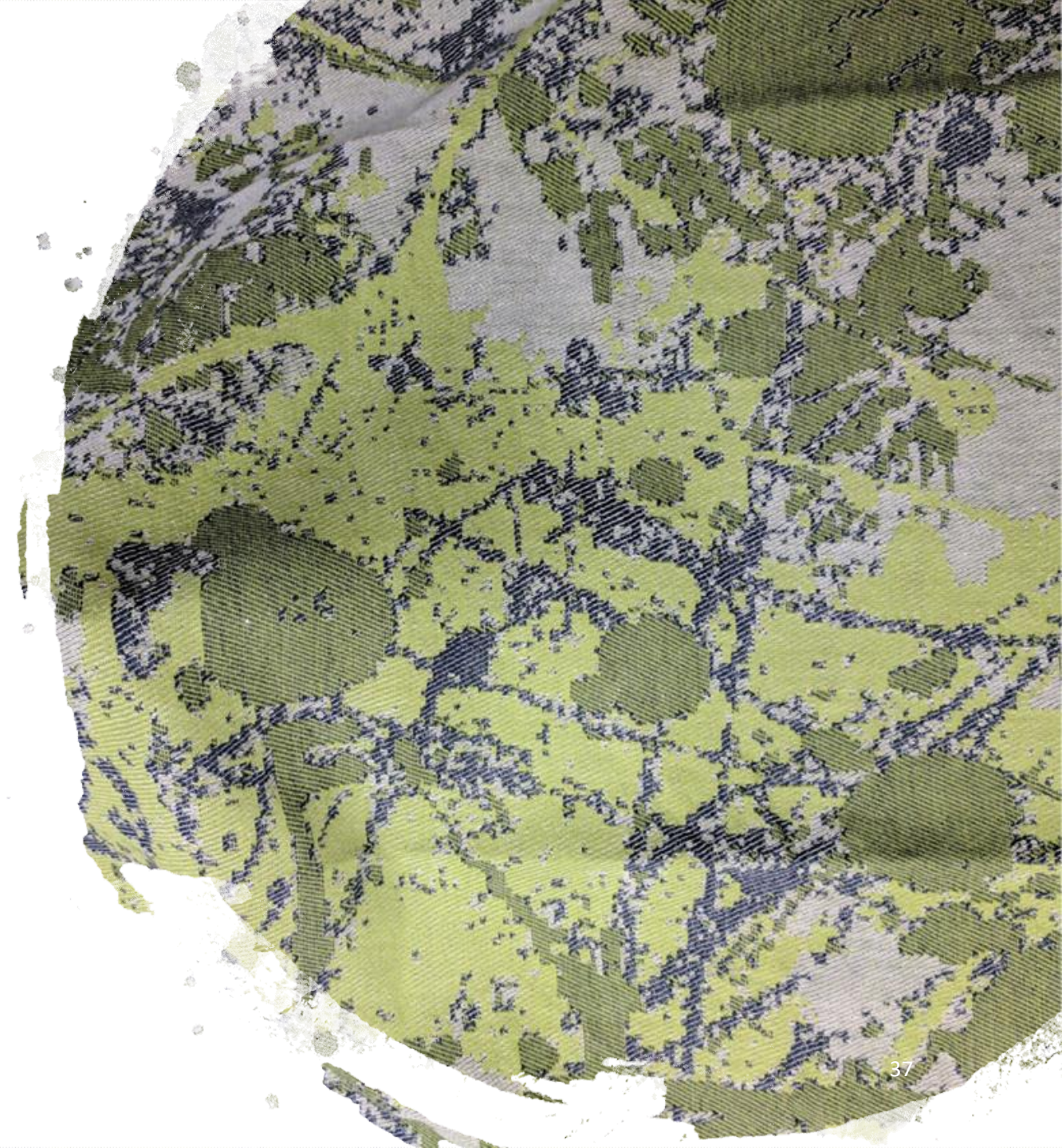
Name: **Huit - 8**

Fibres: 51% Irish linen 49% responsibly sourced cotton

Colour: Navy & pistachio

Washed width: 142cm wide,

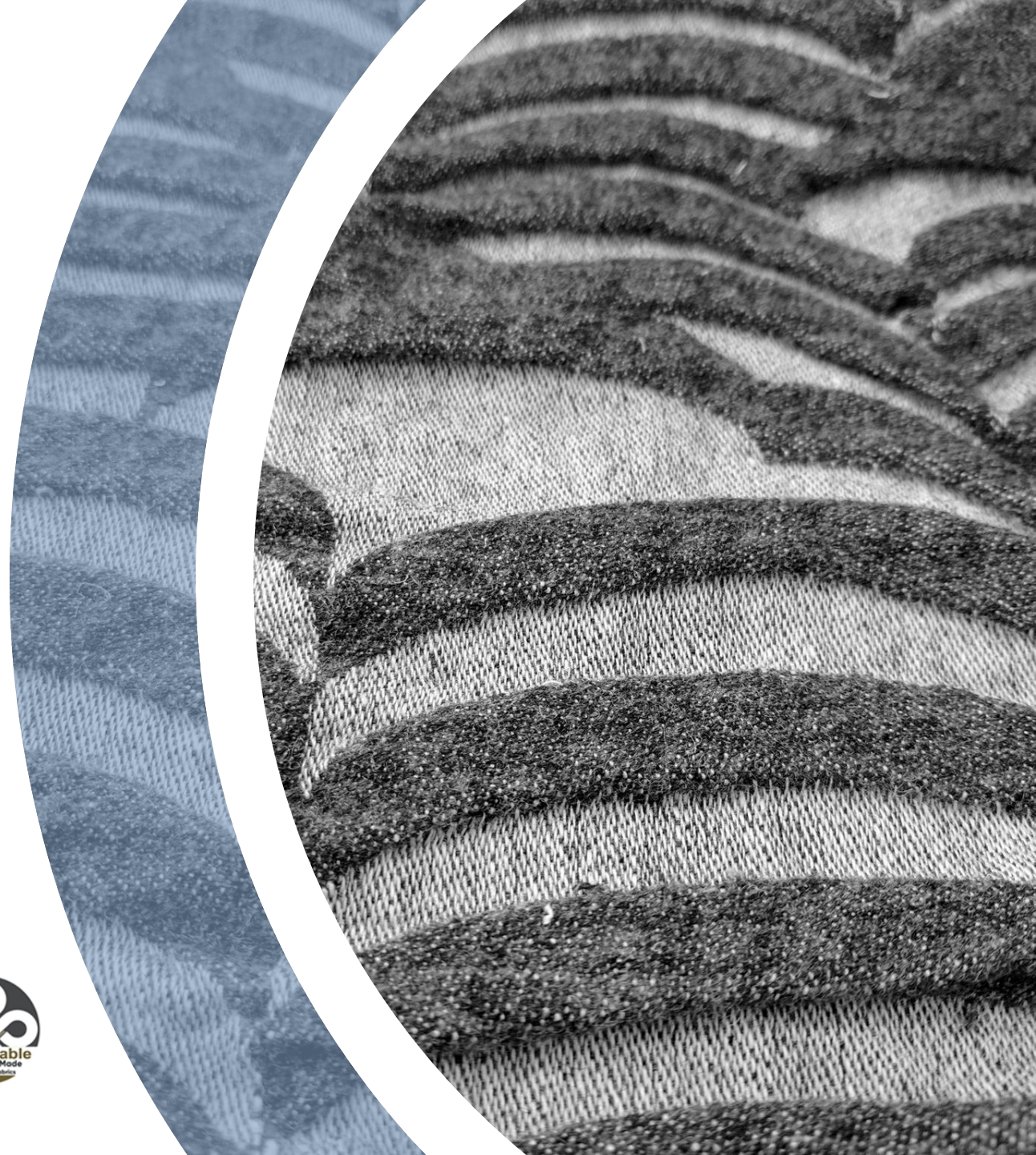
Weight: 272gsm



John **England**

JE2085W, Large repeat Coins

- 51% linen, 49% lambs wool,
- 323gsm,
- 142cm wide



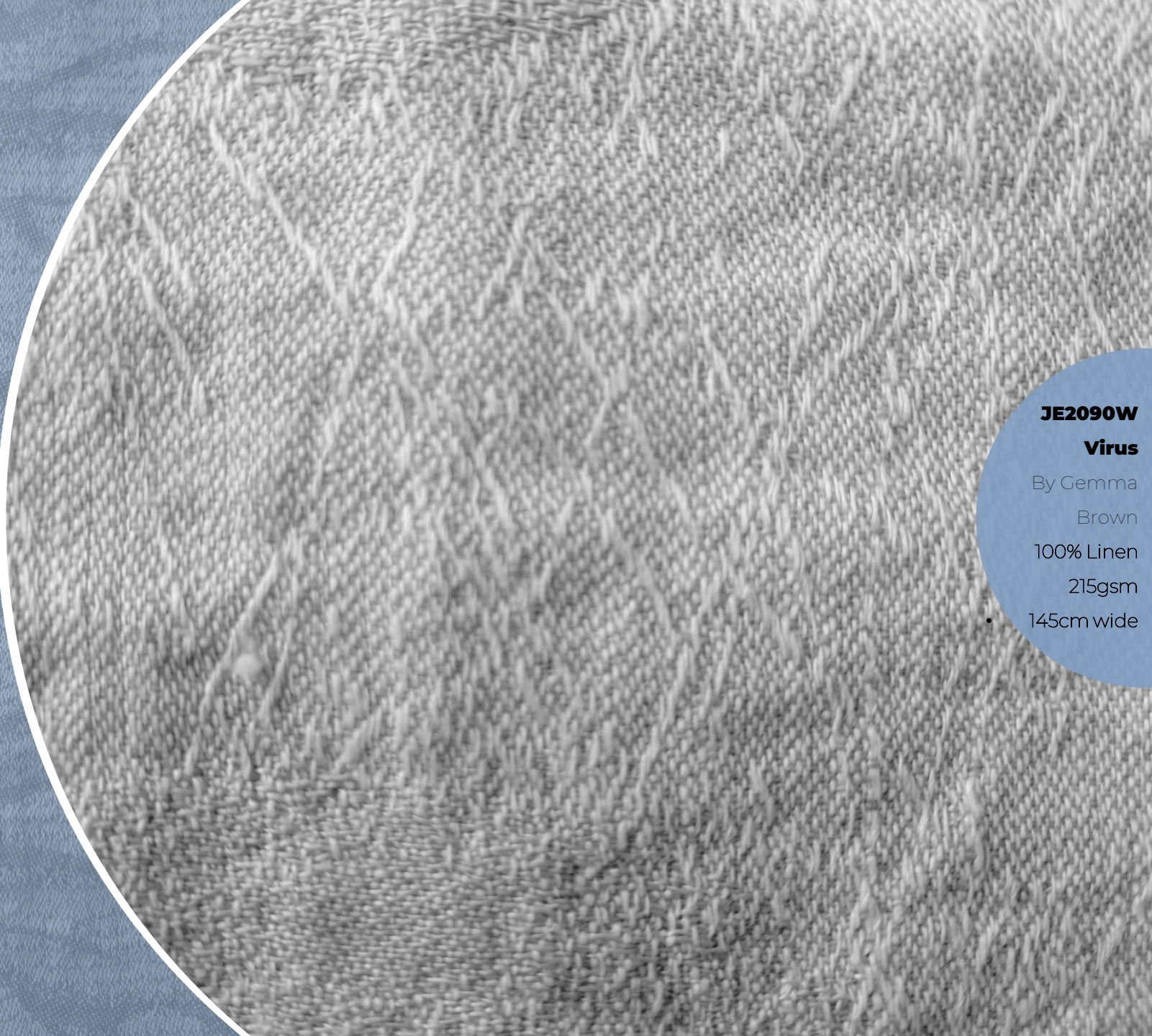
Tel: 028 4062 0400

info@johnengland.com

39



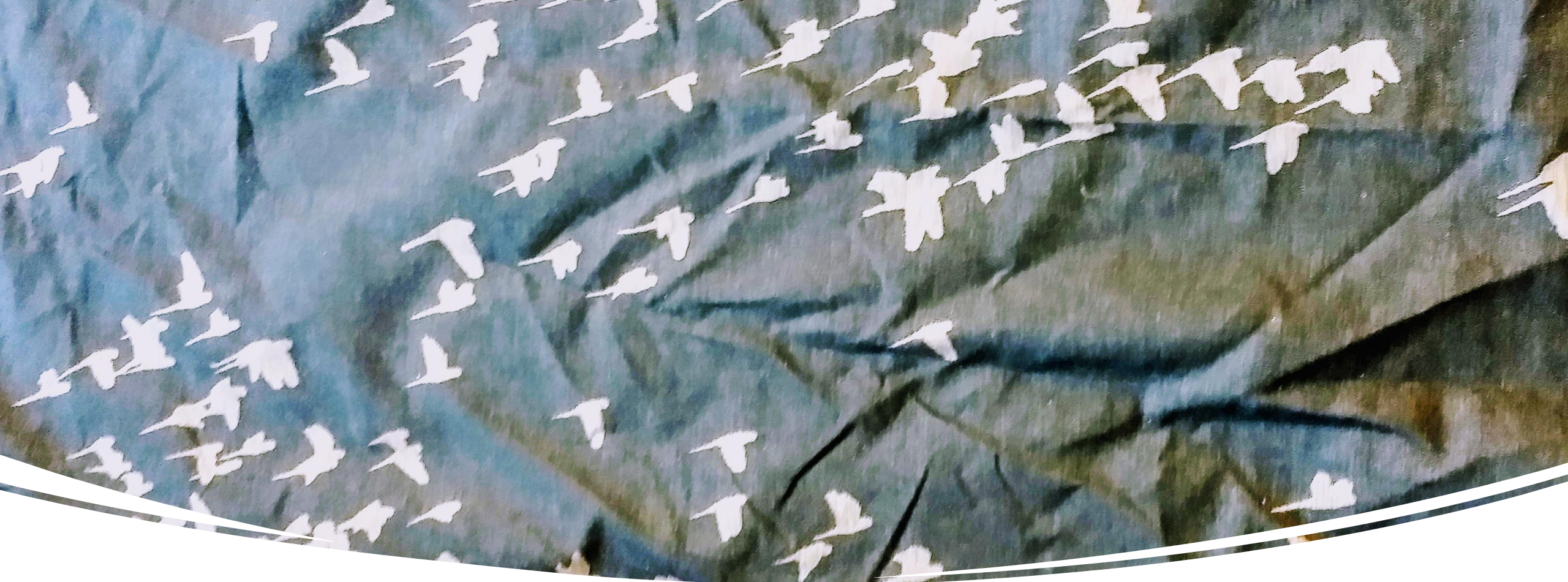
JE2089W
Lilly's wish
By Gemma Brown
100% linen
225gsm
145cm wide



JE2090W
Virus

By Gemma
Brown
100% Linen
215gsm
• 145cm wide

John **England**



John **England**

JE1992W /TF6755

Flight to freedom

- 50% Linen 50% cotton union
- Denim
- LARGE SCALE REPEAT
- 148cm wide

info@johnengland.com Tel: 028 4062 0400



4
1

John **England**

JE2043W

Dark Thorne

- Linen Cotton Union
- approx 51/49%
- 182cm wide -
- heavy weight
- (Draperly, upholstery)

info@johnengland.com Tel: 028 4062 0400



John **England**

4
2

JE2068W (RIGHT)

Ashford vine (Raw Umber)

100% Linen

221gsm

150cm wide

JE2067W (Left)

Ashford Vine (teal)

51% Linen /49% cotton union

264gsm

150cm

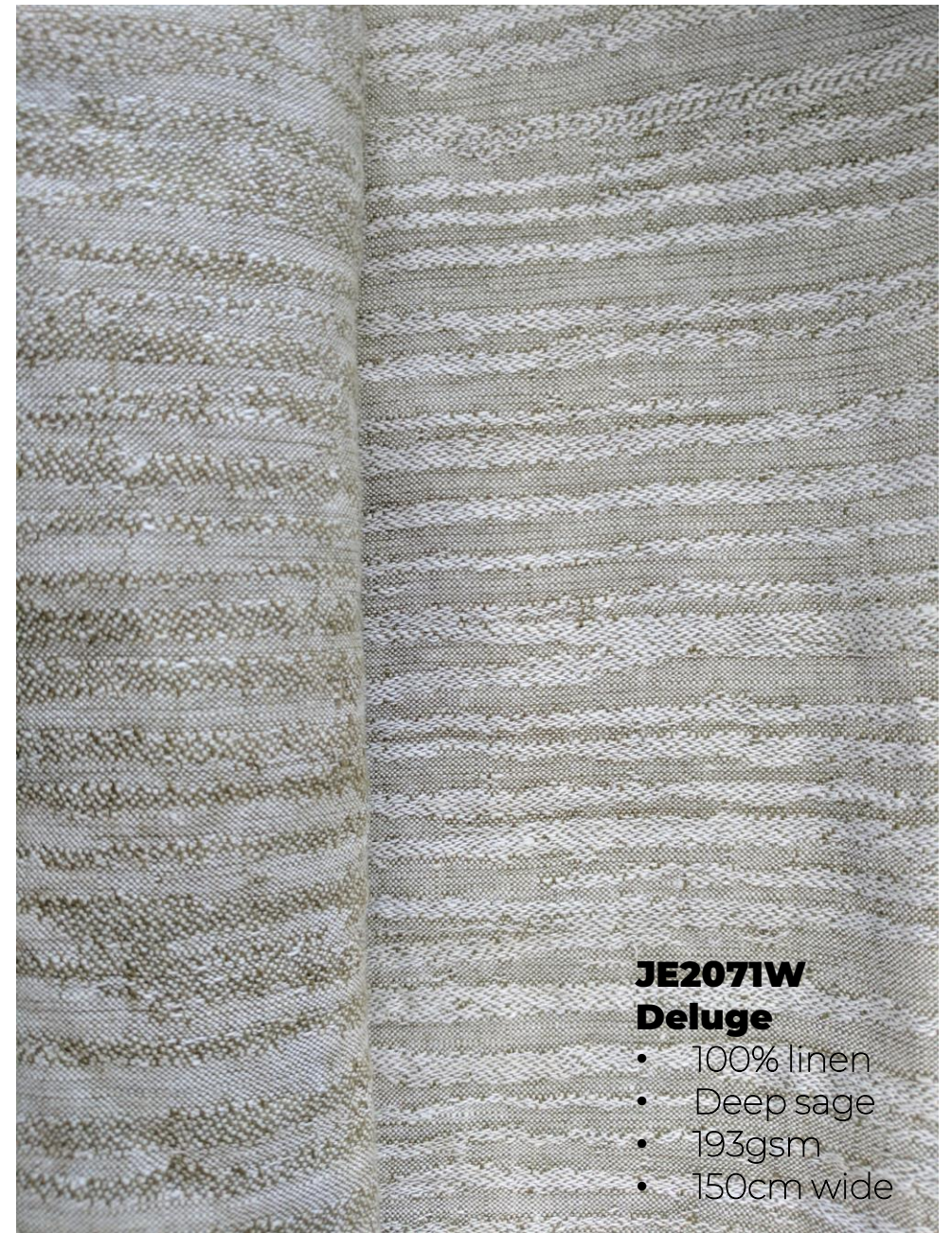


info@johnengland.com Tel: 028 4062 0400



JE2029W
Puppy dog-tooth

- 60%Linen 40% lambs Wool
- Light Fawn
- 104cm wide
- Approx. 320gsm



JE2071W
Deluge

- 100% linen
- Deep sage
- 193gsm
- 150cm wide



JE2082W labyrinth

51% linen 49% responsibly
sourced cotton union

138cm wide,

247gsm

JE2064W Multitude,

100% Linen
134cm wide,
235gsm

John England

Everything is inspired, designed, woven and finished right here in our **Co Down, Northern Ireland** factory – just for you – by hand



Gary & Donna
Technical Weaver &
Technical designer



Inspection



Weaving



Set-up



John **England**

Sustainable Fabrics

Managing Director & Design Partnerships:-
Judith Neilly

Sales:-
Michael Best
Karen Levy
Danielle Levy

Sales support:-
Bernie & Aidan
salesupport@johnengland.ie

Technical Design & Design your own
collaborations:-
Donna Campbell

John England Irish Linen
& JE Theatrical
54 Scarva Road
Banbridge
Co Down
BT32 3AU